



# LOWESTOFT

FLOOD RISK MANAGEMENT PROJECT

## Newsletter



Virtual visitor centre 1

Flooding from the sea 2

Flooding from rivers and extreme rainfall 3

Community engagement 4

Your involvement 4

### Stay in touch

[www.lowestoftfrmp.org.uk](http://www.lowestoftfrmp.org.uk)

[lowestoftfrmp@eastsoffolk.gov.uk](mailto:lowestoftfrmp@eastsoffolk.gov.uk)

 [@Lowestoft\\_FRMP](https://twitter.com/Lowestoft_FRMP)

 [@LowestoftFRMP](https://www.facebook.com/LowestoftFRMP)

 [@Lowestoft\\_FRMP](https://www.instagram.com/Lowestoft_FRMP)

# Welcome

Over the past few months we have made vital progress with the Lowestoft Flood Risk Management Project. As you may be aware, in July 2020 the project was awarded £43m from the Government's Green Recovery Fund, which added to funding from the New Anglia Local Enterprise Partnership, Flood Defence Grant in Aid, Local Levy contributions, funding from the Department of Education and contributions from Suffolk County Council and East Suffolk Council means that the project can progress.

Since then, the project has progressed at a pace, with construction of the tidal floodwalls officially beginning in May. Progress has also been made on the design phase of the tidal barrier, with marine ground investigations taking place in February and the completion of the navigation simulation in April.

In May we opened our virtual visitor centre – a place where you can find out about the project, ask any questions you have and leave feedback via a survey. We will be updating the centre throughout the project as we progress. Visit the centre here:

[www.lowestoffrmp.org.uk/consultations](http://www.lowestoffrmp.org.uk/consultations)

We hope that the information is helpful to you, but if you have any queries at all, please do get in touch.

Best wishes

David Ritchie  
Chair, Lowestoft Flood Risk Management Board



## Virtual Visitor Centre

In May we launched our virtual visitor centre providing information about development and construction of the tidal flood walls and tidal barrier.

The virtual centre provides information about the history of the project, how it has progressed and the ways in which the project is providing opportunities for Lowestoft.

Information boards feature visualisations of how the flood defences will look and images of work that has already been completed. Visitors can ask questions using a chat facility, which will be collated and answered by the project team. Visitors can also share their views and concerns via a survey.

Visit the centre here:  
[www.lowestoffrmp.org.uk/consultations](http://www.lowestoffrmp.org.uk/consultations)



# Flooding from the Sea

## Tidal Floodwalls

In May 2021 ground was officially broken on package one of the tidal floodwalls. We welcomed representatives from our partners to a small, socially distanced ceremony on Hamilton Road. We were pleased to share the ceremony via a livestream to over 150 people. The full ceremony can now be viewed on our website here:

<https://www.lowestoffrmp.org.uk/construction>

Full details of where the tidal floodwalls are being built can be found at our virtual visitor centre.



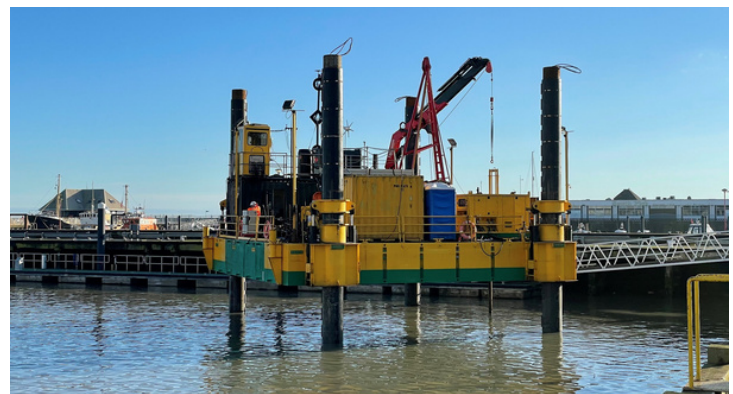
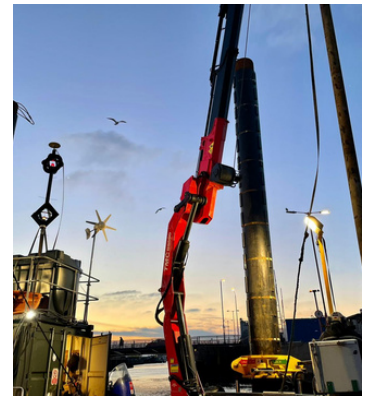
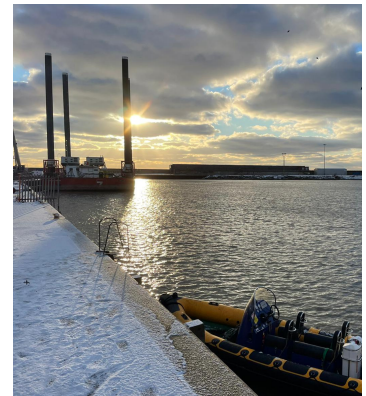
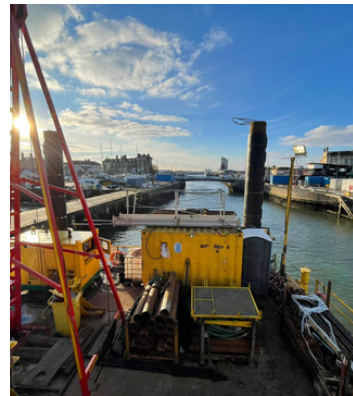
Photos: Warren Page

## Tidal Barrier

Progress has been made towards the outline design for the tidal barrier.

### Marine Ground Investigations

In February 2021 marine ground investigations were completed. These involved the drilling of test holes in the seabed ranging from 10 to 40 metres deep, from a jack-up barge. Material samples were taken for testing to assess the geotechnical properties of the ground, the results of which will inform the foundation design of the tidal barrier. The analysis will also be used to develop the design of temporary jetties that will be installed for the construction phase of the tidal barrier.



Photos: James Hamnett (Jacobs)

# Flooding from Rivers and Extreme Rainfall

Suffolk County Council has responsibility for managing flood risk from surface water and small watercourses. This role includes the identification of locations at particular risk from these sources and, where possible, developing projects to reduce the risk of future flooding. The Council has welcomed the opportunity to partner with East Suffolk Council via Coastal Partnership East to be part of the wider project which has resulted in the flood risk being reduced for over 150 properties across the town.

Construction of a new floodwall and pumping station is nearly complete, which will significantly reduce the risk of flooding of Velda Close occurring in the future.

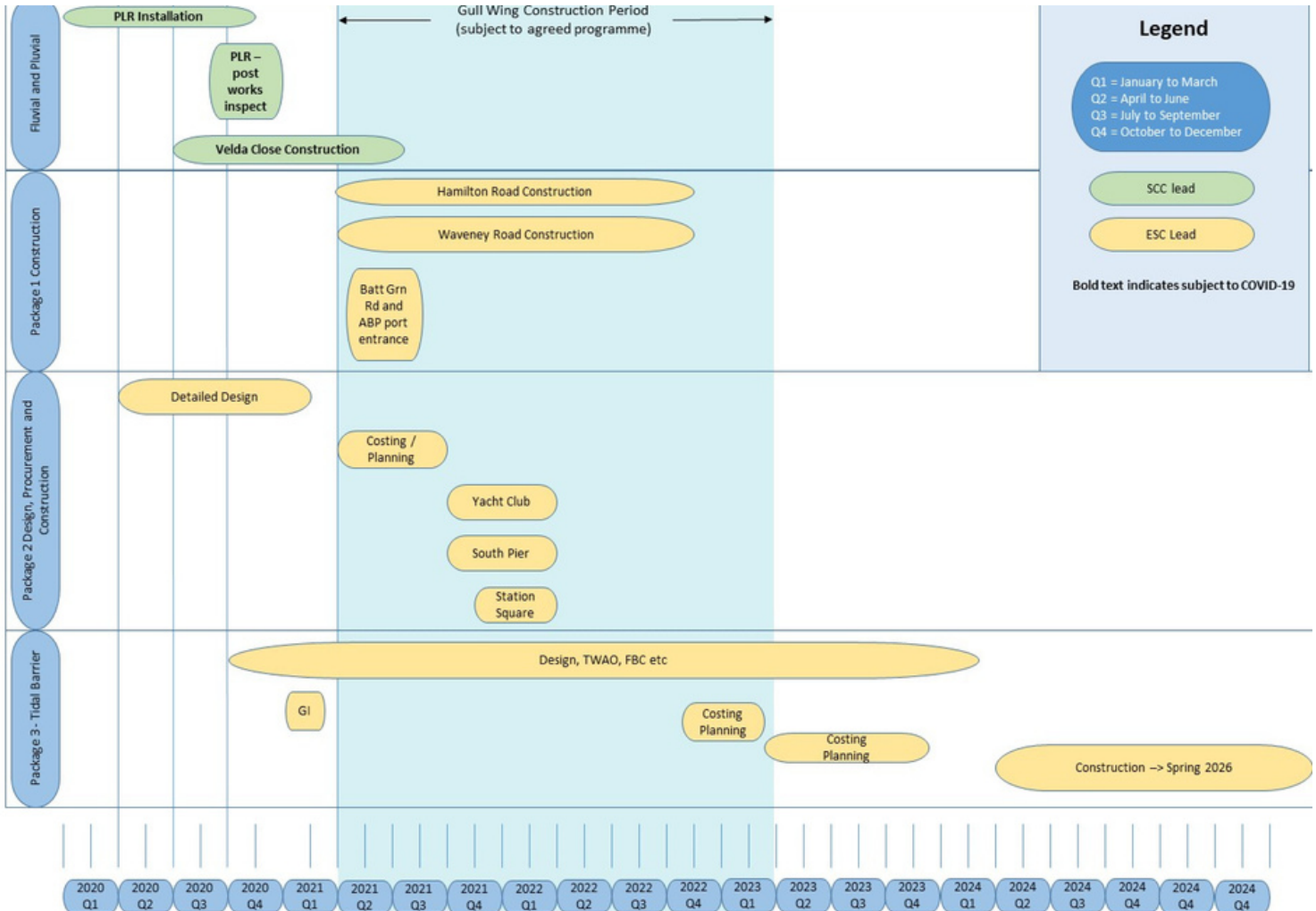
Where properties were identified as being at risk from surface water flooding, but could not be protected by a community defence, they have been offered Property Level Resilience measures. These include flood doors, non-return valves in external pipe work and self-sealing air blocks. Installation of these measures into 123 homes is now nearing completion.

For full details of protection from rivers and rainfall visit our virtual visitor centre here:



[www.lowestoftfrmp.org.uk/consultations](http://www.lowestoftfrmp.org.uk/consultations)

## Project Timeline



# Community Engagement

Our project was procured through the Scape framework, giving us an opportunity to generate social value at each stage of the project. Our social value work in Lowestoft will focus on creating apprenticeships, reducing carbon emissions, hiring NEETs, saving car miles and initiatives to support older, vulnerable, and disabled people. We will also engage local students, community groups and charities with the project through our community engagement work. So far this year this has included:

- In February we provided four virtual work experience placements for students interested in the industry.
- In June our apprentices gave presentations to over 100 students at East Coast College. We employed a local videographer to film the presentations so that we can share them across our website and social media.
- In July we attended Constructarium's Women in Construction event at CITB headquarters in Bircham Newton. We met bright and talented people interested in joining the industry, who we hope to welcome to our site for work experience in the future.
- We have engaged local social enterprise Access Community Trust to provide our onsite catering for our meetings and training days.
- We are installing electric charging points around our site compound and hiring electric vans.
- We have procured bikes from a local company to use around site, saving up to 30 car/ van miles per day.



# Your Involvement

This year we have begun engaging with the public to understand your views and concerns about the project as we progress. We have re-established our Strategic Steering Group and Key Stakeholder Group, which meet at regular intervals to provide the project team with input about our activity.

In May we hosted a series of Virtual Public Meetings, inviting members of the public to join us on a Zoom call to hear about the project and ask any questions. If you missed these, we will be hosting some bite size update sessions soon.

## Stay in touch

[www.lowestoffrmp.org.uk](http://www.lowestoffrmp.org.uk)

[lowestoffrmp@eastsoffolk.gov.uk](mailto:lowestoffrmp@eastsoffolk.gov.uk)



@Lowestoft\_FRMP



@LowestoftFRMP



@Lowestoft\_FRMP

## Our Partners



## Our Delivery Partners

