



LOWESTOFT

FLOOD RISK MANAGEMENT PROJECT

Newsletter



Flooding from the sea 2

Flooding from rivers and extreme rainfall 3

Project timeline 3

Your Involvement 3

Working with young people 4

Stay in touch

www.lowestoftfrmp.org.uk

lowestoftfrmp@eastsoffolk.gov.uk

 [@Lowestoft_FRMP](https://twitter.com/Lowestoft_FRMP)

 [@LowestoftFRMP](https://www.facebook.com/LowestoftFRMP)

 [@Lowestoft_FRMP](https://www.instagram.com/Lowestoft_FRMP)

Welcome

Since our July newsletter great progress has been made on the Lowestoft Flood Risk Management Project.

The construction on the tidal floodwalls has progressed well, with the first of the brick cladding on the wall on Waveney Road being installed, smartening the area while also providing vital protection against flooding.

The tidal barrier structure will now take the form of a 40m mitre gate, the first to be built without diverting the navigation channel and the second largest in the UK. This decision was taken following navigation simulations of the original 28m design which showed a necessity to maintain the current width of the navigation channels for larger vessels using the inner harbour. This will allow Lowestoft to continue developing as a hub for offshore wind energy.

The project has also been working closely with schools and young people to offer opportunities of work experience, training and employment.

Our Virtual Visitor Centre where you can find out more about the project, ask any questions you have and leave feedback via a survey is open now and will remain so for the duration of the project. Visit the centre here:

www.lowestoftfrmp.org.uk/consultations

We hope that the information is helpful to you, but if you have any queries at all, please do get in touch.



Best wishes

David Ritchie
Chair, Lowestoft Flood Risk Management Board

Flooding from the Sea

Tidal Barrier

A 40m mitre flood gate, the second largest in the UK, will be built in the entrance to Lake Lothing. The ambitious project will see the mitre flood gate be the first of such structure in the UK to be built without diverting the navigation channel. The gate will form the tidal barrier element of the project and be built over a number of winter seasons to maintain access to the inner harbour.

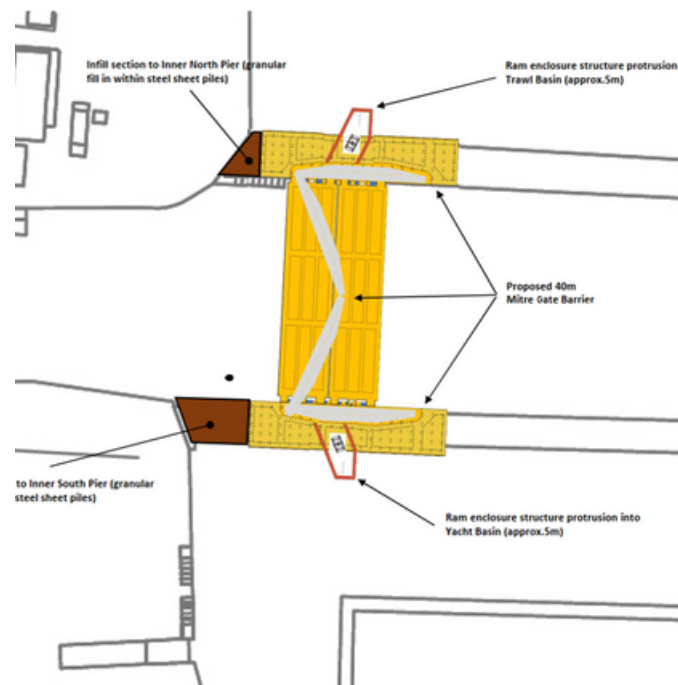


Image: Colne Barrier

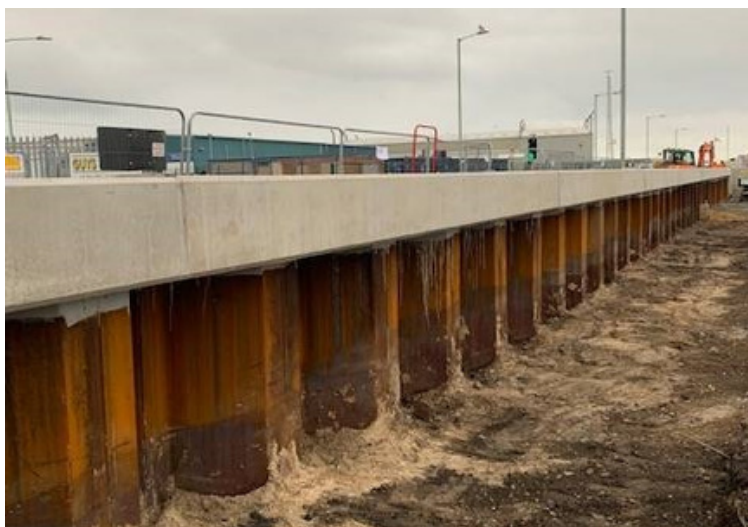
Members of the project team recently visited two other tidal barriers in the region: the Colne barrier and the Ipswich barrier.

Learning will be taken from both these projects to inform the Lowestoft tidal barrier.

Tidal Floodwalls

Construction on package one of the tidal floodwalls officially began in May 2021, with works continuing at a pace along Hamilton Road and Waveney Road. The tidal floodwalls are starting to take shape on

Waveney Road, with brickwork and coping stones already installed. Elsewhere on Hamilton Road, we are making great progress with painting of sheet piling underway.



The construction on package two of the tidal floodwalls around the Royal Norfolk and Suffolk Yacht Club and South Pier is expected to start in early 2022 and will be split over two winter seasons,

with work stopping in March 2022 and recommencing in October 2022. Work can only take place over the winter months due to the impact construction would have on tourism in the summer.

Flooding from Rivers and Extreme Rainfall

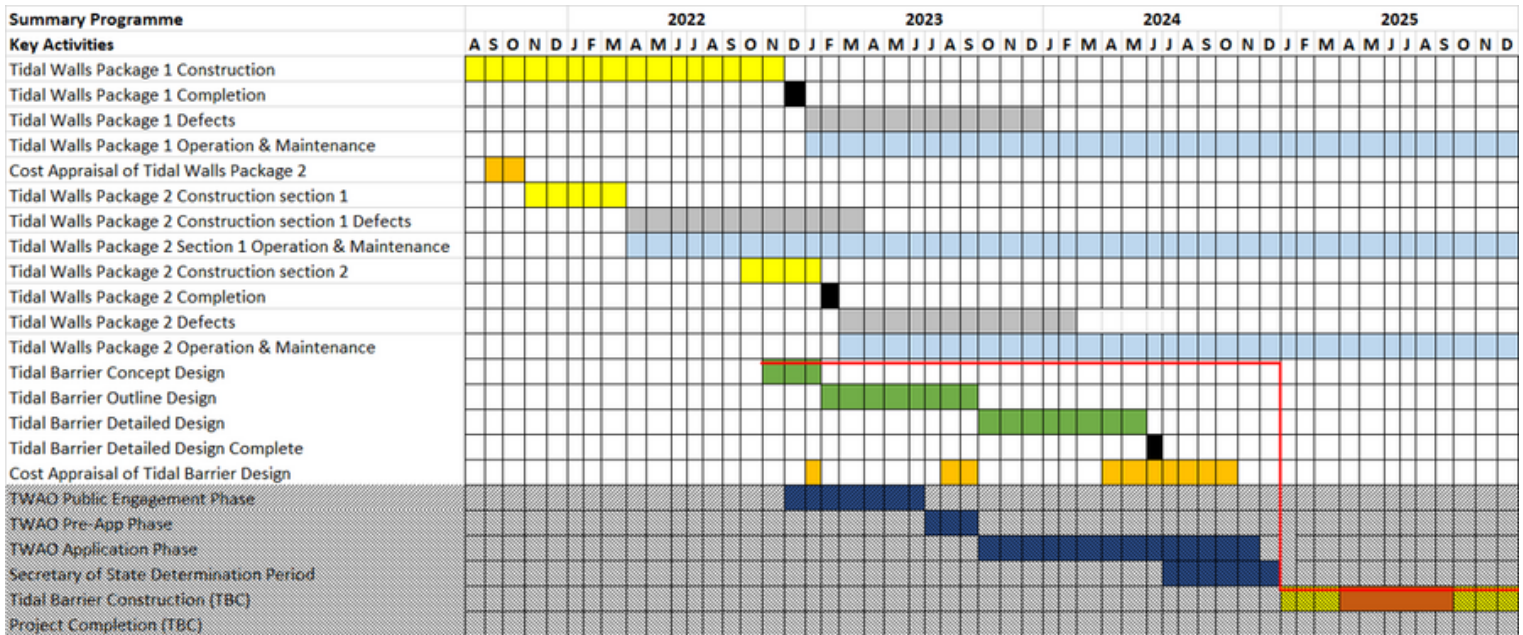
The fluvial and pluvial works have been led by Suffolk County Council and involve the installation of new flood walls and a pumping station at Velda Close. These works were completed in summer 2021.



Property Level Resilience (PLR) measures have also been installed in 123 households. Following final checks, this element of the project was completed November 2021.

Project Timeline

The change in design of the barrier gate has had an impact on the project timeline. The detailed design phase for the mitre gate will begin next year and provide a firm completion date. As a result of this the programme below indicates the current programme, with the greyed out section representing the elements of the project subject to change until the detailed design has been completed.



Your Involvement

The tidal barrier requires a Transport Works Act Order (TWAO). This is granted by the Secretary of State and is needed when construction can change or affect navigation. To complete this work and to enable us to go ahead with the project we will of course need to work closely with local communities, businesses and organisations. As the detailed design of the barrier is developed we will be holding a series of public consultations next year to better understand your concerns. We will share details of these consultations across all our platforms including this newsletter.

Working with young people

Over the past few months we have been working widely within the community, particularly around working with schools and young people.



Virtual Careers Fair

At the Norfolk and Suffolk Coast Forum we launched a Virtual Careers Fair for young people offering an unrivalled opportunity to explore routes into civil engineering, from higher education to apprenticeships, and find out about opportunities local to the region.

Using gaming technology, visitors can independently navigate the fair, with stands from leading employers and organisations including the Environment Agency, Institute of Civil Engineering and East Suffolk Council.

The Virtual Careers Fair has been made possible thanks to generous support from sponsors, including Aecom.

Visit the Virtual Careers Fair at <https://nscec.exhibition.app>

Stay in touch

www.lowestoftfrmp.org.uk

lowestoftfrmp@east Suffolk.gov.uk

 @Lowestoft_FRMP

 @LowestoftFRMP

 @Lowestoft_FRMP

Work Experience

With the start of construction on the tidal floodwalls we have been delighted to welcome a number of young people on work experience placements on the project.

In June our contractor Balfour Beatty attended the Constructionarium Women in Construction event where we met Irena who completed a work experience placement in September.



We have also been working closely with East Coast College to offer opportunities to their construction students. During the October half term we welcomed Zak, who we have subsequently been able to offer a long-term work placement and joins our team each Friday.



In November we worked with the Prince's Trust to offer a two-week work placement to Sean as part of their Team Programme in Lowestoft. During his placement Sean also gained an Industrial Cadets Silver Certificate.



Our Partners



Our Delivery Partners

