



# LOWESTOFT

FLOOD RISK MANAGEMENT PROJECT

## Newsletter



Tidal Flood walls 2

Tidal Barrier 4

Your Involvement 4

Working with the community 5

### Stay in touch

[www.lowestoftfrmp.org.uk](http://www.lowestoftfrmp.org.uk)

[lowestoftfrmp@eastsoffolk.gov.uk](mailto:lowestoftfrmp@eastsoffolk.gov.uk)



@Lowestoft\_FRMP



@LowestoftFRMP



@Lowestoft\_FRMP

# Welcome

The first few months of 2022 have seen great progress to both the construction of the tidal flood walls and the ongoing design phase of the tidal barrier.

Stretches of tidal flood wall are now complete on Hamilton Road and Waveney Road, with construction moving into new areas including the South Pier and in the Port entrance. Read on to see photos of these works.

In January navigation simulations took place for the new design for the tidal barrier, a 40m mitre flood gate. Below you will find images of the simulations kindly provided by HR Wallingford.

We have also continued working with the community, including providing Easter

Eggs to Lowestoft FISH (Food in School Holidays), welcoming STEM students for a site visit and continuing to offer work experience placements.

Our Virtual Visitor Centre remains open and offers an useful overview of the project so far and offers the opportunity to get in touch with the project team and ask any questions you may have.

Visit the centre here:

[www.lowestoftfrmp.org.uk/consultations](http://www.lowestoftfrmp.org.uk/consultations)

Best wishes

David Ritchie  
Chair, Lowestoft Flood  
Risk Management Board



## Flooding from the Sea

### Tidal Flood walls

In April we moved onto the next stage of the tidal flood walls, beginning construction on a section of Waveney Road from the bus stop around to the Port control office.

This required a short night closure on Waveney Road to install a barrier on the footpath. A diversion to the footpath is clearly signed.





# Tidal Floodwalls (Continued)

Construction on the tidal flood walls on Waveney Road and Hamilton Road continues. Work on the South Pier has paused over the summer months to prevent any impact on tourism the construction might bring, work will recommence in the autumn. Below are a selection of images which show our progress.



Concrete pour on the South Pier.



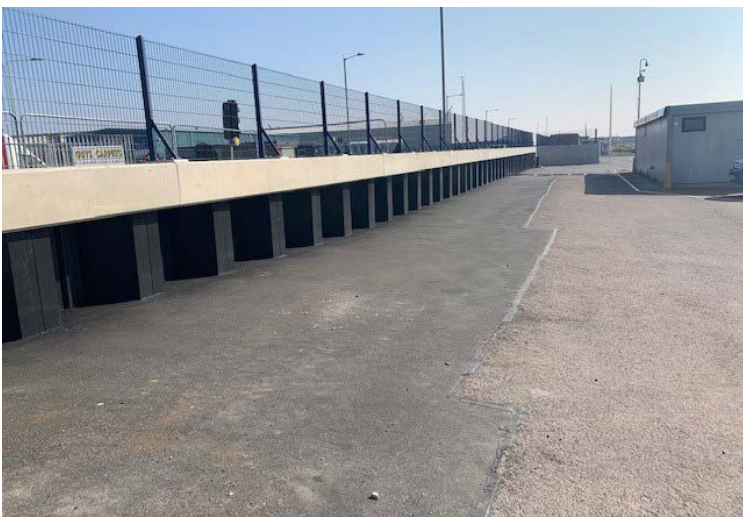
Temporary access to the South Pier.



Coping stones near the Port entrance on Waveney Road.



Crane assisting sheet piling works on Hamilton Road.



Completed tidal wall and fence on Hamilton Road.



Completed tidal wall on Hamilton Road.



# Tidal Barrier

We are currently in the Outline Design Phase of the tidal barrier, which will take the form of a 40m mitre flood gate.

At the end of January a Navigation Simulation was successfully completed on the design for the 40m mitre flood gate. This took place at HR Wallingford UK Ship Simulation Centre. Fully functioning bridge simulators were used, where the bridge was surrounded by a 360-degree simulation of a ship coming into Lowestoft. The simulations included a variety of weather conditions both in day and night time.



Image: HR Wallingford



Image: HR Wallingford

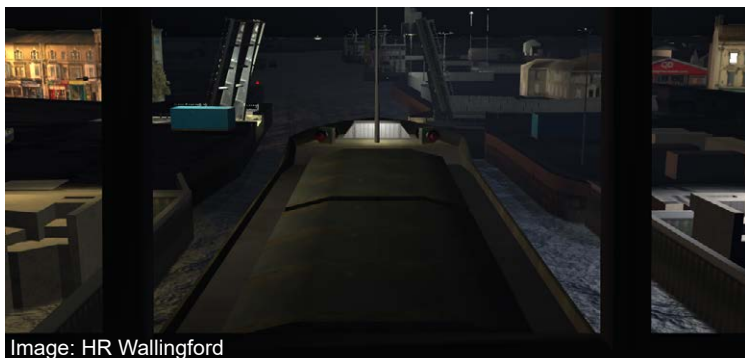


Image: HR Wallingford



Image: HR Wallingford

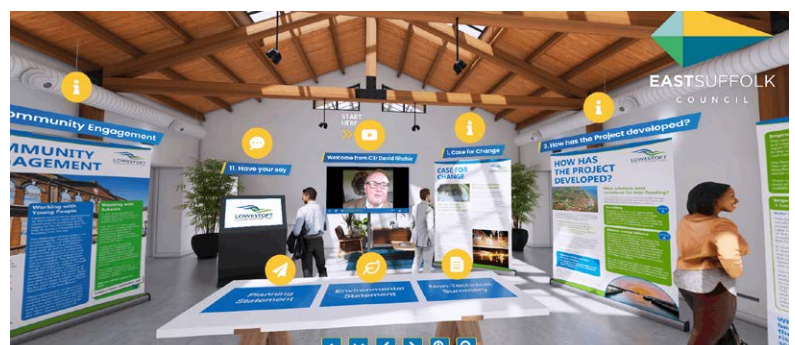
## Your Involvement

The tidal barrier requires a Transport Works Act Order (TWAO). This is granted by the Secretary of State and is needed when construction can change or affect navigation. To complete this work and to enable us to go ahead with the project we will of course need to work closely with local communities, businesses and organisations. As the detailed design of the barrier is developed we will be holding a series of public consultations later this year to better understand your concerns. We will share details of these consultations across all our platforms including this newsletter.

## Virtual Visitor Centre

Our Virtual Visitor Centre is open now and is a fantastic place to find out more about the project and ask any questions you may have.

[www.lowestoffrmp.org.uk/consultations](http://www.lowestoffrmp.org.uk/consultations)



## Our Partners



HM Government

## Our Delivery Partners



**Balfour Beatty**

## Stay in touch

[www.lowestoffrmp.org.uk](http://www.lowestoffrmp.org.uk)



@Lowestoft\_FRMP



@LowestoftFRMP



@Lowestoft\_FRMP

# Working with the community

We have continued provide opportunities for young people and work with community groups in Lowestoft.

## Easter Eggs

We have donated 200 Easter Eggs to Lowestoft FISH (Food in School Holidays). Run by Lowestoft Community Church, FISH supports many families in the town.



## Site Visit

In March we welcomed engineering, science and maths students from University Technical College Norfolk to our site for a tour of Waveney Road, Hamilton Road and the South Pier. Students were able to see our construction operations happening in real time and get a feel for where we are building flood defences in Lowestoft, from the safety of their minibus.

Following the site tour, students were given a presentation on apprenticeship opportunities, effective networking and communication skills as part of their programme with charity Career Ready.



## Work Experience



We have been working with The Prince's Trust and their latest cohort of TEAMS programme participants. As part of this we have supported three work experience placements, including Ryan who was really engaged with the project, asked loads of questions and enjoyed his time on our site.

We also ran some mock interviews for the students, enabling them to get some practice with employers before their programme ends.